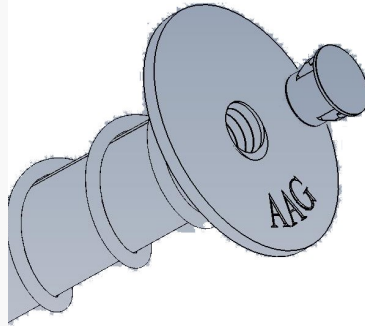


Overview Asphalt Anchors Corp. has developed the **BoltHold** family of ground anchors suitable for mounting structures to asphalt surfaces. The anchors are installed in the asphalt using a grout to chemically bind the anchors to the asphalt. The internal thread in the anchors allows structures to be attached using a variety of bolts.



Once the anchors are installed, they can not be removed without tearing up the asphalt. However, the anchors are installed flush to the surface of the asphalt, and can be left in the ground without concern for obstructing pedestrian and vehicular traffic.

In seasonal applications where the structure that is attached to the asphalt needs to be removed, it is imperative to protect the internal threads of the anchors from dirt. AAC offers special thread protection caps that are easy to install, simple to remove, and low in cost. The caps come in sizes to tightly match the thread in the anchors.



Installation Push the cap into the anchor and hammer gently to make sure that the cap is seated flush to the head of the anchor.

Removal Use a sharp wood chisel and hammer the cap sideways to remove it from the anchor. The caps can not be reused, as they become slightly deformed when they are pushed in to the anchor.

ThreadGuard Packaging

	3/8" / M10	7/16" / M12
Bag SKU	53-0208	53-0209
Caps per bag	100	100
Bag dim, cm	10 x 12 x 2	12 x 13 x 2
For anchors	SP10-38, SP12-38	SP18-716
Bag weight	0.03 Kg	0.04 Kg
Bag Volume	0.000002 CBM	0.000003 CBM